



ASCO - 2/2 CRYOGENIC VALVE 1/4"- 3/4"

SCE222E002LT
VALVE 2/2 NC 1/2" 230VAC

- Normally Closed
- Media temperature -196 °C to +90 °C
- Working pressure 0 to 9 bar
- Housing in brass

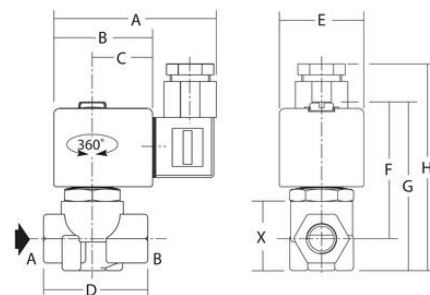
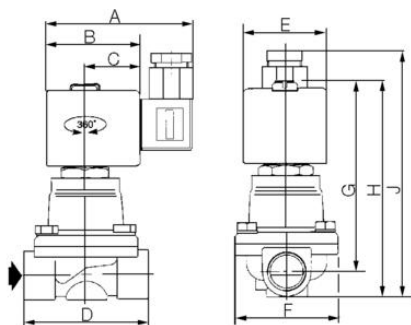


PRODUCT DESCRIPTION

TECHNICAL DATA

Close delay	75 ms
Connection	1/2 BSP
Differential air pressure max	9 bar
Differential pressure max	9 bar
Differential pressure min	0 bar
Flow factor / flow coefficient	3,3
Flow max	55 l/min
Function 1	2/2
Function 2	Normally Closed (SPST)
IP class	IP65
Material body	Brass
Material flask	Brass
Material of seals	PTFE
Material piston ring	PTFE flask filled
Material piston rod seal	PTFE
Material plunger	Stainless steel

Material plunger tube	Stainless steel
Material seat	Brass
Material short-circuit ring	Copper
Material spring	Stainless steel
Mounting	Upright, Vertical
Power consumption	16,7 W
Response time off	100 ms
Temperature of media from	-196 °C
Temperature of media to	90 °C
Temperature operational max	50 °C
Temperature operational min	-20 °C
Throughput	16 mm
Type of valve	Solenoid valve
Weight	1,1 kg
Voltage AC	230 V



Ventil	A	B	C	D	E	F	G	H	J
SCE222E002LT	80	50	30	70	45	59	104	118	131
SCE222F003LT	80	50	30	70	45	59	108	124	137

